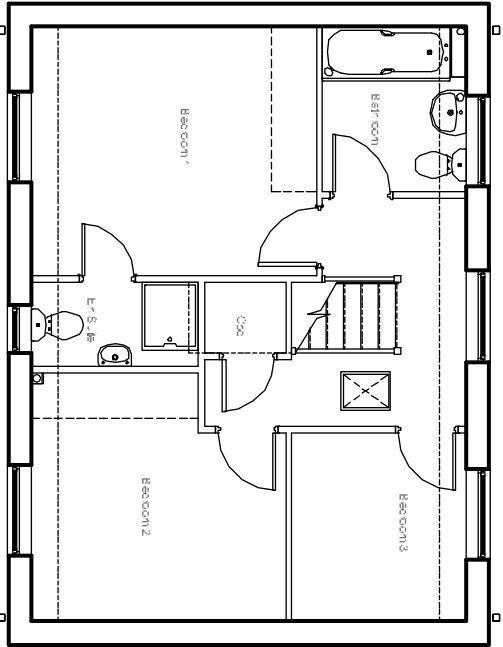


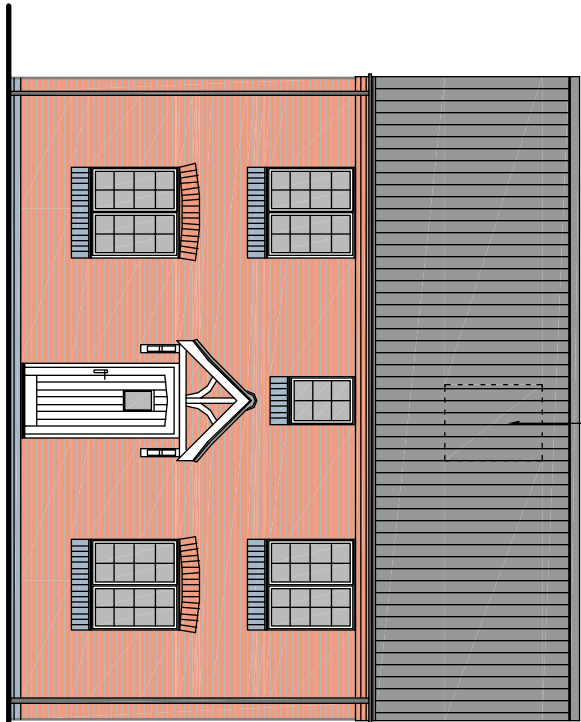
Revision	Date	By	Chkd	No
Alterations following planners comments.	29/03/11	JEB	NH	A
Floor heights added.	17/05/11	JEB	NH	B

P-2011-00546

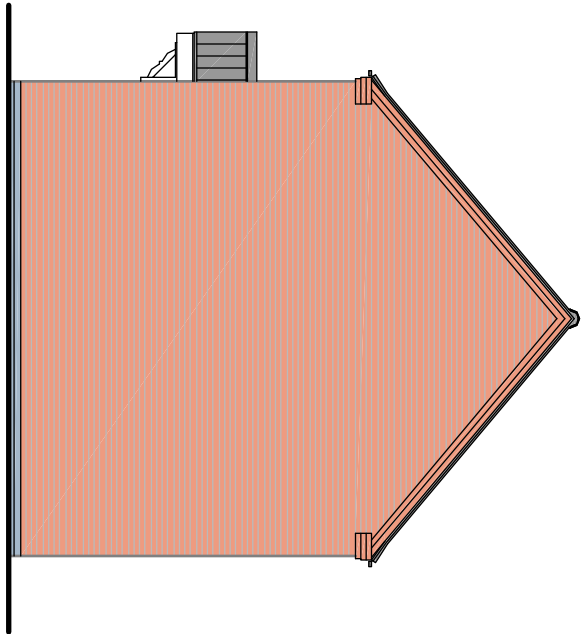
Received 19/05/11



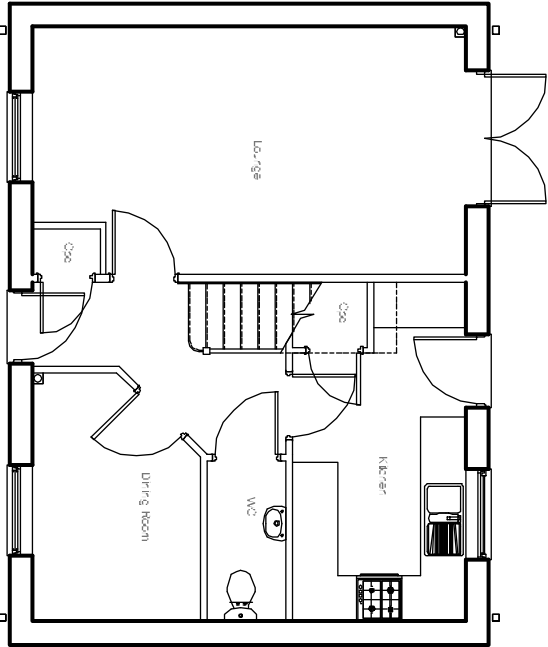
First Floor Plan



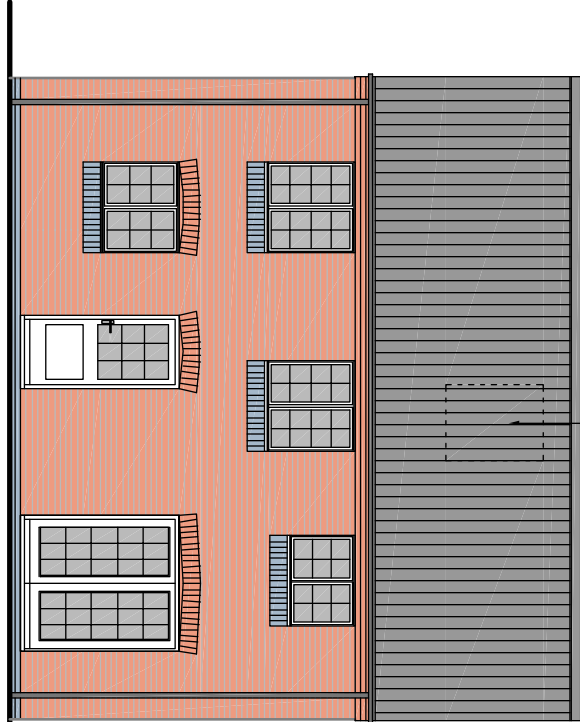
Front Elevation



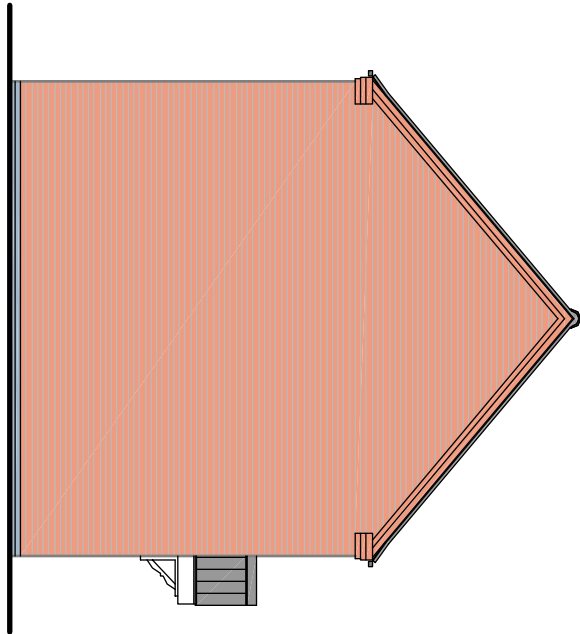
Side Elevation



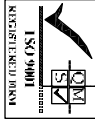
Ground Floor Plan



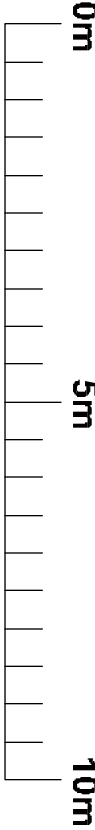
Rear Elevation



Side Elevation



Ground Floor Area: 46.1m² / 496.5 sq ft
First Floor Area: 45.2m² / 486.7 sq ft
Total Floor Area: 91.3m² / 983.2 sq ft



PLANNING

Peveril Homes Ltd
Residential Development
Burton Road
Tutbury
Lichfield C

1:100 @ A3 August 2010 6640/P/30 B
Drawn By: JEB Checked By: NH

Henry Mein Partnership
Architects